

Binswitch

Capacitance Point Level Switch

APPLICATION

Detects level or plug situations in bulk granular solids or liquids.

METHOD OF OPERATION

The Binswitch Sensor detects level or plug situations for bulk granular solids or liquids in tanks, bins, or silos and can be used as a plug or choke detector in chutes, conveyors and elevator legs. Programmable features include time delay on material arriving or leaving, and failsafe relay settings for high and low levels. A two color LED shows material present or absent and flashes red or green to show the time delay is operating. The programmable sensor operates on 12-240 VAC/DC and gives a changeover relay contact output. The polycarbonate housing is corrosion and abrasion resistant, dust-tight, and waterproof.

FEATURES

- ▶ **Totally Sealed Construction (Submersible)**
- ▶ **Applications for Level or Plug Sensing**
- ▶ **Adjustable Sensitivity**
- ▶ **CSA Class II Div 1 Groups E, F & G Approved**
- ▶ **IP67 Protection**

PART NUMBERS/ACCESSORIES

- ▶ BS1V3FC Standard Binswitch 12 VDC
- ▶ BS1V4FC Standard Binswitch 24 VDC
- ▶ BS1V6FC Standard Binswitch 110-240 VAC
- ▶ BP1V10FC Programmable Binswitch
- ▶ BS2V10FC 2-Wire Binswitch Low Level Fail Safe
- ▶ BS1V10FC 2-Wire Binswitch High Level Fail Safe
- ▶ SMP Mounting Plate
- ▶ A34NPT 3/4" NPT Conduit Adapter
- ▶ BMPA 1-1/4" NPT Mount
- ▶ BAS Abrasion Shield 1-1/4" NPT Mount
- ▶ BMPG36 Gland Mount
- ▶ BSM3 3" Clamp Mount

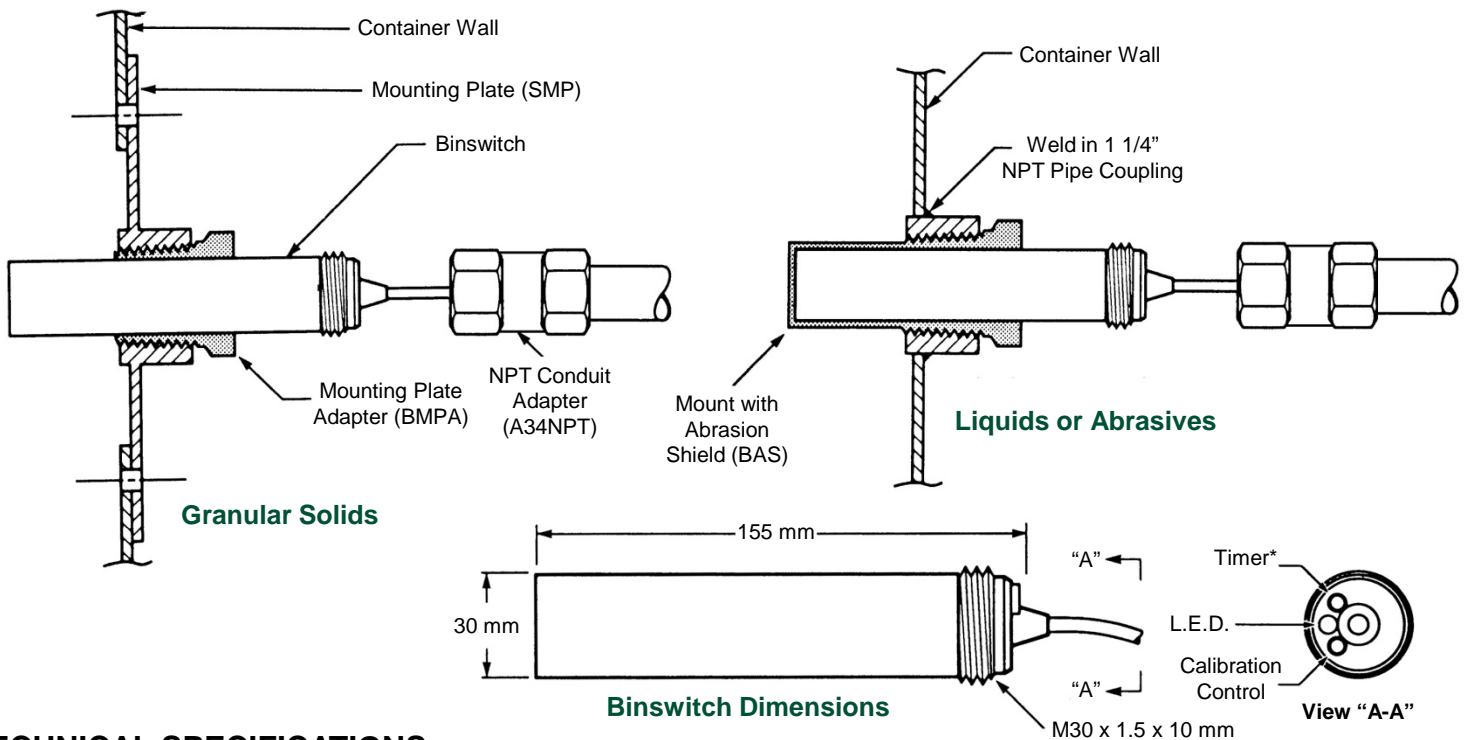


BMPA
1-1/4" NPT Mount

BAS
Abrasion Shield

Binswitch

BETTER BY DESIGN



TECHNICAL SPECIFICATIONS

Binswitch - Detects Level or Plug Situations in Bulk Granular Solids or Liquids

* Timer on Programmable Model Only

	Standard Binswitch	Programmable Binswitch	2-Wire Binswitch
Power Supply:	110/240 VAC or 12 VDC, 24 VDC (specify when ordering)	12-240 VDC/24-240 VAC	12-240 VDC/24-240 VAC
Supply Tolerance:	-15% to +10%	N/A	N/A
Power Consumption:	30 mA	50 mA	40 mA
Fuse:	5 amp maximum	5 amp maximum	5 amp maximum
Operating Temp:	-22° F to +158° F	-22° F to +158° F	-22° F to +158° F
Sensing Range:	1" (25mm) typical	1" (25mm) typical	1" (25mm) typical
Output:	Voltage free relay 1 pole normally open 1 pole normally closed	Programmable voltage free relay 1 pole normally open 1 pole normally closed	Triac, 200 mA max current
Contact Rating:	3 amp, 240 VAC, non-inductive	3 amp, 240 VAC, non-inductive	200 mA max current
Fail-to-Safe:	High level fail-safe, relay de-energized material present/power failure	High or low level fail-safe, relay de-energized material present/power failure	High level fail-safe, relay de-energized material present/power failure
Calibration:	Screw potentiometer	Screw potentiometer	Screw potentiometer
Timer:	None	Programmable for "make", "break" (0-1 or 0-5 minutes)	None
LED Display:	Red: material absent	Red: material present Green: material absent Red Flashing: timing material arriving Green Flashing: timing material leaving	Red: material absent
Cable Enclosure:	6' (2m) 5 conductor cable Polycarbonate, threaded one end 30mm x 1.5mm	6' (2m) 5 conductor cable Polycarbonate, threaded one end 30mm x 1.5mm	6' (2m) 2 conductor cable Polycarbonate, threaded one end 30mm x 1.5mm
Protection:	IP67 – NEMA 6 and 6P Dust tight and water resistant	IP67 – NEMA 6 and 6P Dust tight and water resistant	IP67 – NEMA 6 and 6P Dust tight and water resistant
Approval:	Approved for Class 2 Div. 1 Groups E, F, & G (US and Canada)	Approved for Class 2 Div. 1 Groups E, F, & G (US and Canada)	Approved for Class 2 Div. 1 Groups E, F, & G (US and Canada)
Weight:	10.5 ounces	10.5 ounces	10.5 ounces

Detailed specification, wiring diagrams and installation/operating instructions available upon request.

Please refer to instruction manual for correct installation. Information subject to change or correction. Sept 2011