

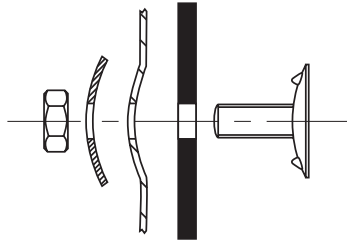


## Euro Bolt & Domed / Flat Washer

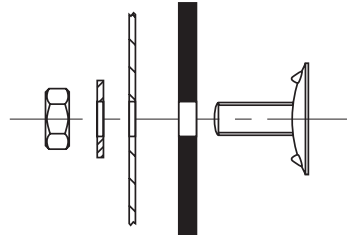
**DIN 15237**

**STEEL/STAINLESS STEEL 304**

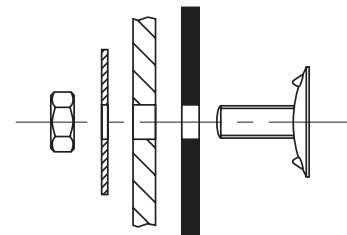
- Actual min core hardness 90-95 Rockwell B
- ISO grade 5.8 (exceeds DIN)
- Large bolt head diameter
- Fully threaded
- Zinc plated as standard or stainless
- Bolt hex nut small & small washer boxed/100 or bolt only bulk packed



For steel buckets with recessed holes use:  
Bolt, hexagon nut and **large domed washer**



For steel buckets with plain holes use:  
Bolt, hexagon nut and **small flat washer**



For plastic buckets use:  
Bolt, hexagon nut and **large flat washer**

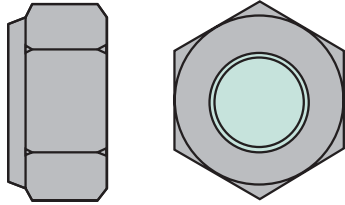
Please refer to instruction manual for correct installation.  
Information subject to change or correction. September 2007.



**4B COMPONENTS**

# Euro Bolt

TECHNOLOGY · INNOVATION · QUALITY · VALUE



**Free Design Service & Technical Support from our team of specialist engineers**

Option: Nylon insert self-locking nut for additional security (DIN 985)

**SPECIFICATION Bolt, Hex nut, small washer (boxed/100) – Kg/100 Overall bolt length**

	Head Ø	Max torque	16	20	22	25	30	35	40	45	50	60	70
Ref.		Nm	(mm)	(mm)	(mm)	(mm)	(mm)	(mm)	(mm)	(mm)	(mm)	(mm)	(mm)
M6	21	8	-	1.29	1.32	1.36	1.44	-	-	-	-	-	-
M7	23	13	1.7	1.78	1.85	1.92	2.06	2.2	-	-	-	-	-
M8	30	20	-	2.79	-	2.97	3.12	3.25	3.42	3.6	3.91	-	-
M10	35	35	-	-	-	5.22	5.33	5.44	5.8	6.15	6.57	-	-
M12	42	70	-	-	-	-	-	8.6	8.78	9.15	9.52	10.26	11.32

Ref.	Domed washer kg/100	Large flat washer kg/100	Nylon insert lock nut kg/100
M6	0.55	0.6	0.32
M7	0.6	-	0.35
M8	0.92	0.6	0.61
M10	1.88	0.72	1.34
M12	2.99	0.85	1.9

**Bolts only (bulk packed) - kg/100**

Ref.	16 (mm)	20 (mm)	22 (mm)	25 (mm)	30 (mm)	35 (mm)	40 (mm)	45 (mm)	50 (mm)	60 (mm)	70 (mm)	Qty
M6	-	0.97	0.99	1.04	1.07	-	-	-	-	-	-	2000
M7	1.27	1.34	1.42	1.47	1.61	1.75	-	-	-	-	-	1500
M8	-	2.17	2.21	2.26**	2.46**	2.59**	2.73	2.86	2.98	-	-	1000
M10	-	-	-	3.76	3.99	4.20**	4.45**	4.74	5.03	-	-	500
M12	-	-	-	-	-	6.35	6.68	7.07	7.47	8.30*	9.26*	500

\*Supplied in bags of 250

\*\*Also available in boxes of 100

Please refer to instruction manual for correct installation. Information subject to change or correction. September 2007.